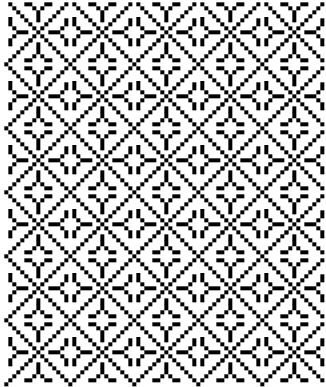


## Type Patterns



### Sketch

For next week do the following:

1. In your sketchbooks

Sketch out a single letterform, make sure you make it large enough so that it will scan well. Choose a letter, it doesn't matter what letter you choose, but how you are drawing your letter. Pay attention to your line, its weight, value, tone, scale, style.

2. In your sketchbooks

Sketch out a pattern based on a single letterform. Your pattern should fill approximately the whole page of your sketchbook. Pay attention to how and if your pattern repeats. It is important, at this point to experiment with forms, so don't try to control everything so much, just draw and have fun.

**Make sure you have multiple versions of the above. Rather than saying, I am going to draw one form, say...I am going to draw for an hour or until I start to exhaust my ideas and energy. Bring a sketchbook full of ideas for next class, not just one or two.**

### Scan

1. Scan in one single letterform and pattern as separate files at 1200ppi and have these files ready for next class on your stations.

**Have FUN !**